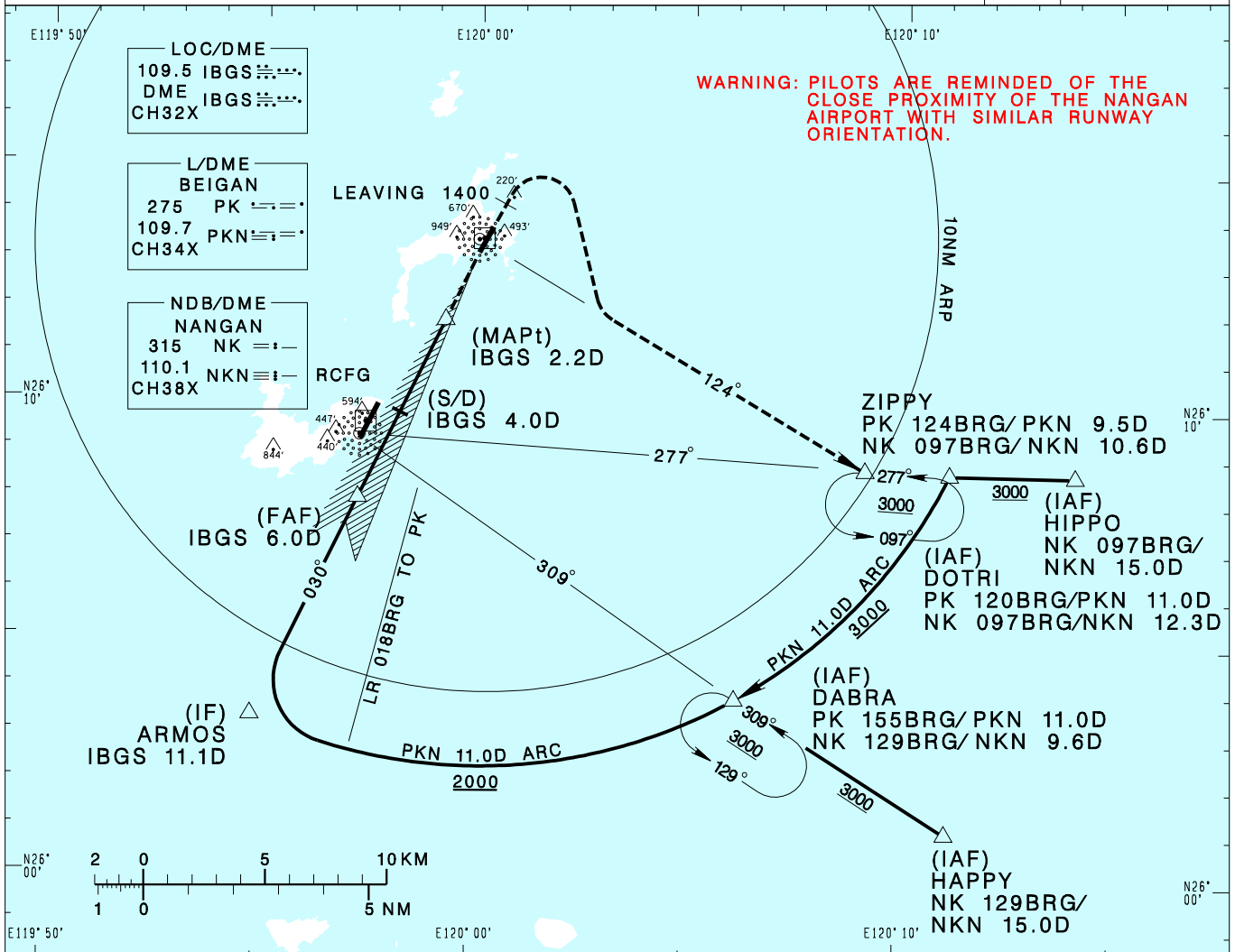


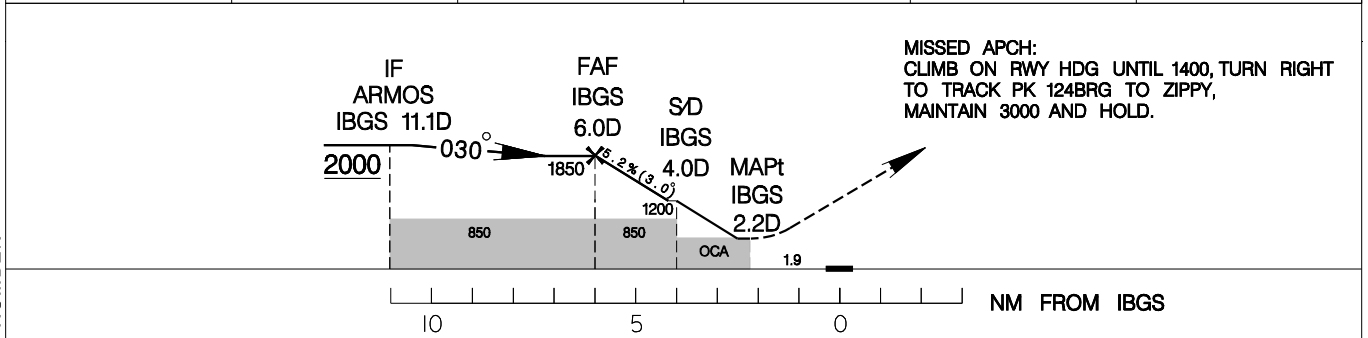
馬祖/北竿機場
MATSU/BEIGAN AD

RCMT
LDA RWY03

TAIPEI APP 121.0 122.3	BEIGAN TWR 118.65	ATIS 127.35	VAR 5° W ↑ 360° 231° 4300' 2000' MSA PK 25NM
Apt Elev: 41'	Rwy03 THR Elev: 26'	Trans Level: FL130	
BEARINGS ARE MAGNETIC; DISTANCES ARE NAUTICAL MILES; ELEVATIONS, HEIGHTS IN FEET			



6DME	5DME	4DME	3DME	2.6DME	DIST to IBGS
1850	1540	1230	910	780	ADVISORY ALT



MINIMA (OCA IN FT, VIS IN M, OCH IN FT)			NOTE 1. CAUTION HIGH TERRAIN NEAR THE AIRPORT. 2. CIRCLING NA NORTHWEST OF AIRPORT. 3. CIRCLING TO RWY 21 N/A AT NIGHT. 4. THE FINAL APCH COURSE OFFSETS FROM RWY CENTERLINE EXTENSION BY 2.7 DEG, AND INTERSECTS AT 1400M FROM THR OF RWY03. *DME REQUIRED.
CATEGORY	A	B	
STRAIGHT-IN MA C/G 4.7%(286ft/NM)	780/2000 754	780/2400 754	
CIRCLING	1300/3600	1259	

CHANGES: NEW PAGE NUMBER